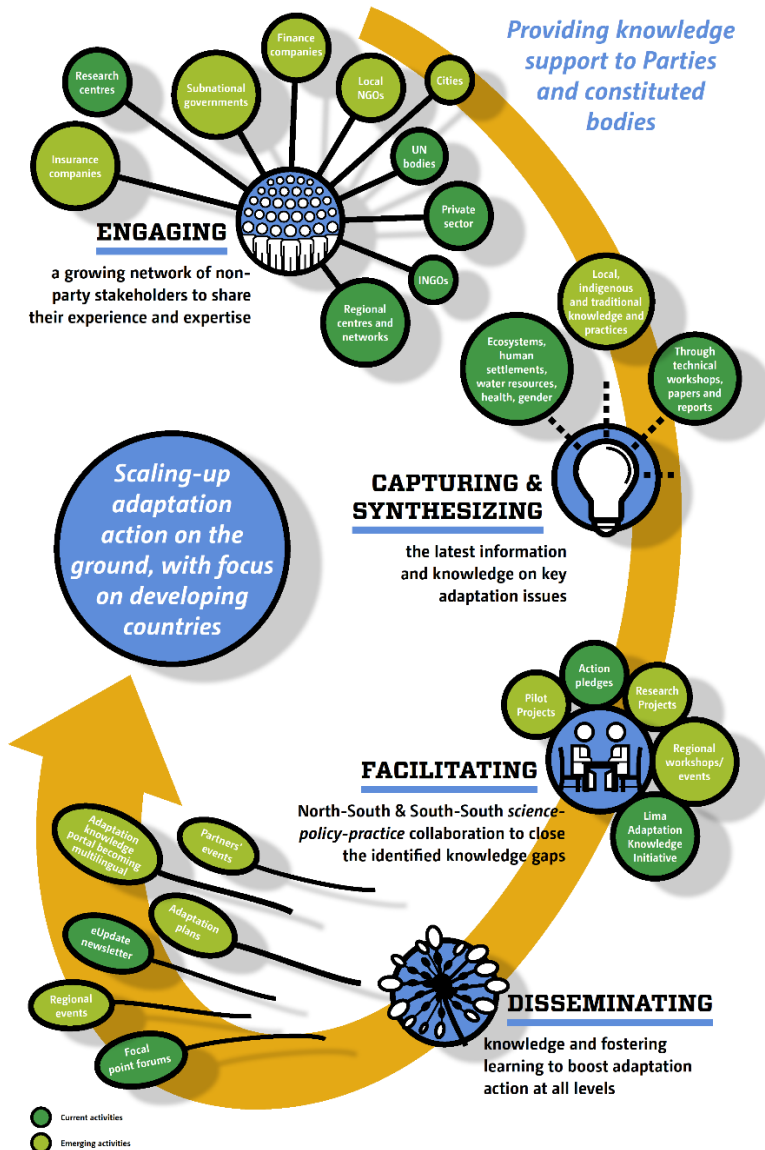




## The Nairobi Work Programme

Advancing adaptation action through knowledge



## Opportunities to engage with the NWP in supporting the NAP process



Join the NWP as a partner to support countries in the process of formulating and implementing NAPs.

Contribute to Open NAP case studies and training on NAPs undertaken by the LEG;



Submit Action pledges in support of NAPs on areas such as: information on tools, case studies on adaptation measures, and tools for engaging stakeholders at the national level;

Provide submissions and contribute to the NWP focal point forum (COP 22, 2017) on human settlements and adaptation, including linkages to the NAPs.



Collaborate with partners and experts to contribute to closing adaptation knowledge gaps at all levels;

Organize regional NAP Expos based on the global NAP Expos.

Provide information on upcoming activities and events relevant to NAPs, to be included on the global calendar of NAP activities maintained on NAP Central;



Contribute to NWP knowledge products on the importance of integrating gender-sensitive approaches and local, indigenous and traditional knowledge and practices into NAPs.

Adaptation Knowledge Portal: [unfccc.int/sites/NWP/Pages/Home.aspx](http://unfccc.int/sites/NWP/Pages/Home.aspx)  
General information: Visit [unfccc.int/nwp](http://unfccc.int/nwp) or email [nwp@unfccc.int](mailto:nwp@unfccc.int)